

Han[®] HsB

Page

| | |
|---|--------------|
| Technical characteristics Han HsB | 07.10 |
| Han 6 HsB | 07.11 |
| Han 12 HsB | 07.14 |

Han
HsB

Specifications
DIN VDE 0627
DIN VDE 0110

Approvals


Inserts

| | |
|--|-----------------------|
| Number of contacts | 6, 12 (2 x 6) + PE |
| Working current (see current carrying capacity) | 35 A max. |
| Working voltage | 500 V |
| Test voltage U_{rms} | 3 kV |
| Insulation group | C |
| Insulation resistance | $\geq 10^{10} \Omega$ |
| Material | Polyamide |
| Temperature range | - 40 °C ... +125 °C |
| Flammability acc. to UL 94 | HB |
| Mechanical working life | |
| - Mating cycles | ≥ 500 |
| Working voltage acc. to UL/CSA | 600 V |

Contacts

| | |
|----------------------|----------------------------|
| Material | copper alloy |
| Surface | |
| - hard-silver plated | 3 μm Ag |
| Contact resistance | $\leq 0.5 \text{ m}\Omega$ |
| Screw terminal | |
| - mm^2 | 6 mm^2 |
| - AWG | 10 |
| - Tightening torque | 1.2 Nm |

Hoods/Housings

| | |
|---|-----------------------------------|
| Material | die cast aluminium |
| Surface | powder-coated RAL 7037 |
| Locking element | Steel, zinc plated/Han-Easy Lock® |
| Hoods/Housings sealing | NBR |
| Temperature range | - 40 °C ... +125 °C |
| Degree of protection acc. to DIN 40 050 for coupled connector | IP 65 |
| Further selection of hoods/housings | chapter 30 |

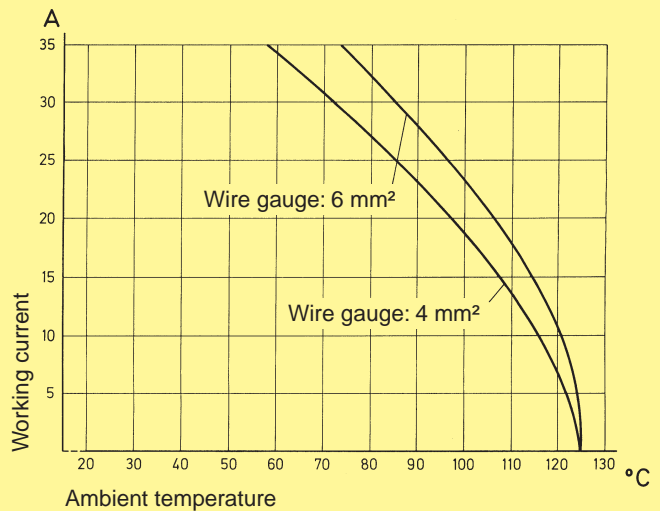
Accessories

| | |
|----------------------------|------------|
| Cable clamps | chapter 40 |
| Coding of hoods/housings | chapter 40 |
| Label acc. to CSA-approval | chapter 40 |
| Han-Snap | chapter 11 |

Current carrying capacity

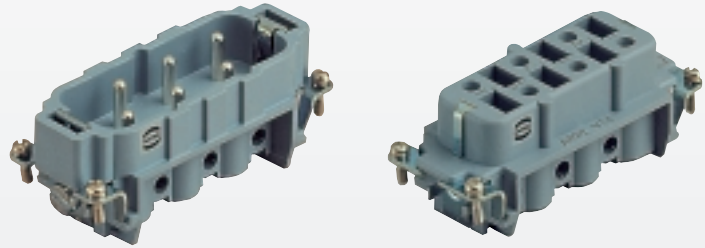
The current carrying capacity is limited by maximum temperature of materials for inserts and contacts including terminals. The current capacity-curve is valid for continuous, not interrupted current-loaded contacts of connectors when simultaneous power on all contacts is given, without exceeding the maximum temperature.

Control and test procedures according to DIN IEC 60 512-3.



Number of contacts

6 +



Inserts

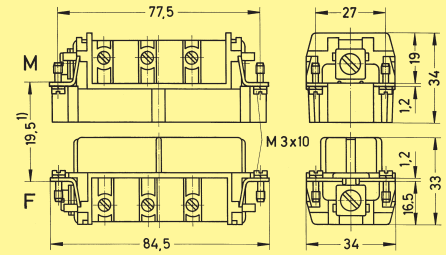
| Identification | Series | Part No. | | Drawing | Dimensions in mm |
|----------------|--------|-----------------|-------------------|---------|------------------|
| | | Male insert (M) | Female insert (F) | | |

Screw terminal

Han
HsB

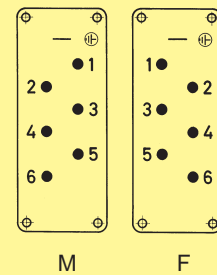
09 31 006 2601

09 31 006 2701

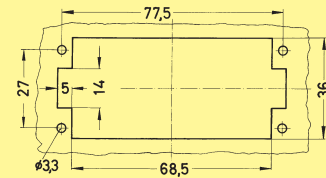


¹⁾ Distance for contact max. 21 mm

Contact arrangement View from termination side



Panel cut out for inserts
for use without hoods/housings



Han
HsB

Han
HsB

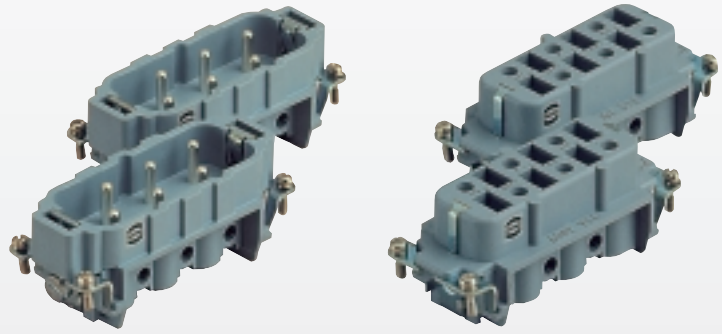
| Identification | Part No. | | Pg | Drawing | Dimensions in mm | | | | | | |
|--|--|--|--|------------------------------|---|--|---|------------------|------|-------------------|------|
| | Low construction | High construction | | | | | | | | | |
| Hoods | Hoods side-entry | 09 30 016 1520 | 21 | | | | | | | | |
| | | 09 30 016 0520 09 30 016 0521 | 21 29 | | | | | | | | |
| | Hoods top-entry | 09 30 016 1420 | 21 | | | | | | | | |
| | | 09 30 016 0420 09 30 016 0421 | 21 29 | | | | | | | | |
| | Protection covers thermoplastic/metal | 09 30 016 5401 | | | | | | | | | |
| | | 09 30 016 5422 | | | | | | | | | |
| Housings | Housing bulkhead mounting | 09 30 016 0301 | — | Panel cut out 82 x 35 mm | | | | | | | |
| | Housings surface mounting | 1 side-entry 09 30 016 1230 | 09 30 016 0230 09 30 016 0231 | 21 29 | Blind way for one cable entry <table border="1"> <thead> <tr> <th></th> <th>h</th> </tr> </thead> <tbody> <tr> <td>Low construction</td> <td>56</td> </tr> <tr> <td>High construction</td> <td>81</td> </tr> </tbody> </table> | | h | Low construction | 56 | High construction | 81 |
| | | | h | | | | | | | | |
| | Low construction | 56 | | | | | | | | | |
| | High construction | 81 | | | | | | | | | |
| | 2 side-entries 09 30 016 1270 | 09 30 016 0270 09 30 016 0271 | 21 29 | | | | | | | | |
| Protection covers thermoplastic/metal | 09 30 016 5405 | | | | | | | | | | |
| | 09 30 016 5425 | | | | | | | | | | |
| Hoods cable to cable | 09 30 016 1730 | 09 30 016 0730 09 30 016 0731 | 21 29 | | <table border="1"> <thead> <tr> <th></th> <th>h</th> </tr> </thead> <tbody> <tr> <td>Low construction</td> <td>47.5</td> </tr> <tr> <td>High construction</td> <td>78.5</td> </tr> </tbody> </table> | | h | Low construction | 47.5 | High construction | 78.5 |
| | h | | | | | | | | | | |
| Low construction | 47.5 | | | | | | | | | | |
| High construction | 78.5 | | | | | | | | | | |
| Protection cover metal | 09 30 016 5426 | | | | | | | | | | |

| Identification | Part No. | | Pg | Drawing | Dimensions in mm | | | | | | | |
|---|-----------------------------|--|--|---|--|--|--|---|------------------|------|-------------------|------|
| | Low construction | High construction | | | | | | | | | | |
| Hoods | Hoods side-entry | 09 30 016 1540 | 21 | | | | | | | | | |
| | | 09 30 016 0540 09 30 016 0541 | 21 29 | | | | | | | | | |
| | Hoods top-entry | 09 30 016 1440 | 21 | | | | | | | | | |
| | | 09 30 016 0440 09 30 016 0441 | 21 29 | | | | | | | | | |
| | Housings | Housings bulkhead mounting | 09 30 016 0307 | — | Panel cut out 82 x 35 mm | | | | | | | |
| | | | with thermo-plastic cover 09 30 016 0306 | — | | | | | | | | |
| with metal cover 09 30 016 0318 | | | — | | | | | | | | | |
| Housings surface mounting | | 1 side-entry | 09 30 016 1250 | | 09 30 016 0250 09 30 016 0251 | 21 29 | | | | | | |
| | | 2 side-entries | 09 30 016 1290 | 09 30 016 0290 09 30 016 0291 | 21 29 | | | | | | | |
| | | 1 side-entry | with thermo-plastic cover 09 30 016 1255 | with thermo-plastic cover 09 30 016 0255 09 30 016 0256 | 21 29 | | | | | | | |
| | | 2 side-entries | with thermo-plastic cover 09 30 016 1295 | with thermo-plastic cover 09 30 016 0295 09 30 016 0296 | 21 29 | | | | | | | |
| | | 2 side-entries | with metal cover 09 30 016 2295 | with metal cover 09 30 016 2297 09 30 016 2298 | 21 29 | | | | | | | |
| Hoods cable to cable | | 09 30 016 1750 | 09 30 016 0750 09 30 016 0751 | 21 29 | | <table border="1"> <tr> <td></td> <td>h</td> </tr> <tr> <td>Low construction</td> <td>47.5</td> </tr> <tr> <td>High construction</td> <td>78.5</td> </tr> </table> | | h | Low construction | 47.5 | High construction | 78.5 |
| | | h | | | | | | | | | | |
| Low construction | 47.5 | | | | | | | | | | | |
| High construction | 78.5 | | | | | | | | | | | |

Han HsB

Number of contacts

12 +



Inserts

| Identification | Series | Part No. | | Drawing | Dimensions in mm |
|----------------|--------|-----------------|-------------------|---------|------------------|
| | | Male insert (M) | Female insert (F) | | |

Screw terminal

Han
HsB

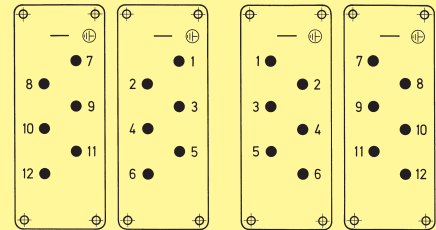
1- 6
7-12

09 31 006 2601
09 31 006 2611

09 31 006 2701
09 31 006 2711

Dimensions for inserts see page 07.11

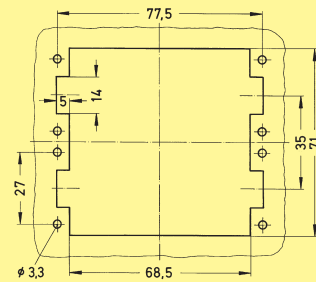
Contact arrangement View from termination side




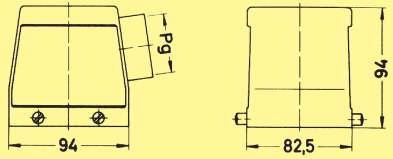

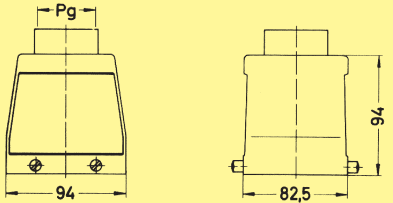
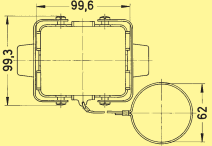

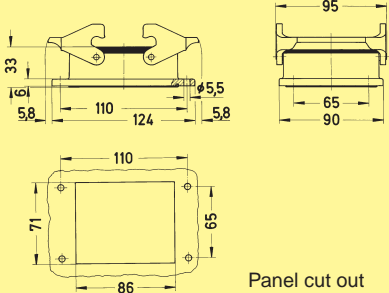

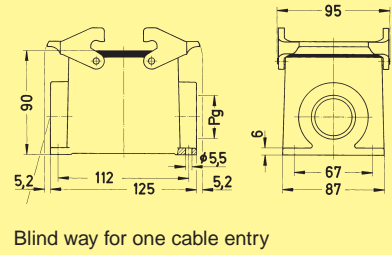

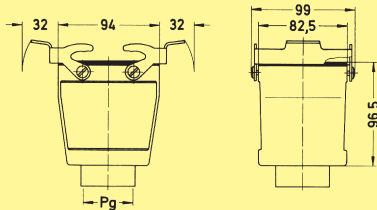
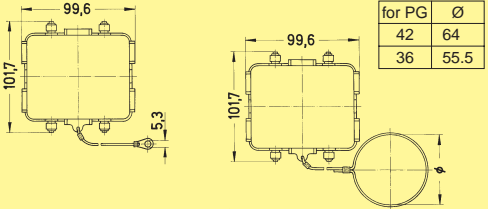
M

F

Panel cut out for inserts
for use without hoods/housings



Han
HsB

| Identification | | Part No. | Pg | Drawing | Dimensions in mm |
|----------------|--|--|--|---|------------------------------|
| Hoods | Hoods side-entry  | 09 30 032 0521 09 30 032 0522 09 30 032 0523 | 29 36 42 |  | |
| | Hoods top-entry  | 09 30 032 0421 09 30 032 0422 09 30 032 0423 | 29 36 42 |  | |
| | Protection cover for hoods | 09 30 032 5420 | — |  | |
| Housings | Housing bulkhead mounting  | 09 30 032 0301 | — |  | |
| | Housings surface mounting  | 09 30 032 0231 09 30 032 0232 09 30 032 0233 09 30 032 0271 09 30 032 0272 09 30 032 0273 | 1 x 29 1 x 36 1 x 42 2 x 29 2 x 36 2 x 42 |  | |
| | Hoods cable to cable  | 09 30 032 0731 09 30 032 0732 09 30 032 0733 | 29 36 42 |  | |
| | Protection covers for housings for cable to cable hoods | 09 30 032 5425 09 30 032 5426 09 30 032 5427 | — 42 36 |  | for PG Ø 42 64 36 55,5 |

Han HsB

Distributed load feeder
with connector
Han® Q 5/0



Han
HsB

Photograph by courtesy of
Fa. Siemens
Antriebs-, Schalt- und Installationstechnik
D-91050 Erlangen